

MT Mass

MT Mass

1/4 Sec 25-36 T19S R30E

Railroad D-97

Bear River

Mendocino

Mendocino

45

State Road

Clearing of Enterprise mill site

Carpenter's Swamp D-23

Mendocino

D-23

D-22

D-21

D-20

D-19

D-18

D-17

D-16

D-15

D-14

D-13

D-12

D-11

D-10

D-9

D-8

D-7

D-6

D-5

D-4

D-3

D-2

D-1

Stakeout File

Carpenter's Swamp D-23

Mendocino

Bear River

Mendocino

State Road 45

Clearing of Enterprise mill site

D-23

D-22

D-21

D-20

D-19

D-18

D-17

D-16

D-15

D-14

D-13

D-12

D-11

D-10

D-9

D-8

D-7

D-6

D-5

D-4

D-3

D-2

D-1

Stakeout File

Carpenter's Swamp D-23

Mendocino

Bear River

Mendocino

State Road 45

Clearing of Enterprise mill site

UNITED STATES DEPARTMENT OF AGRICULTURE—FOREST SERVICE

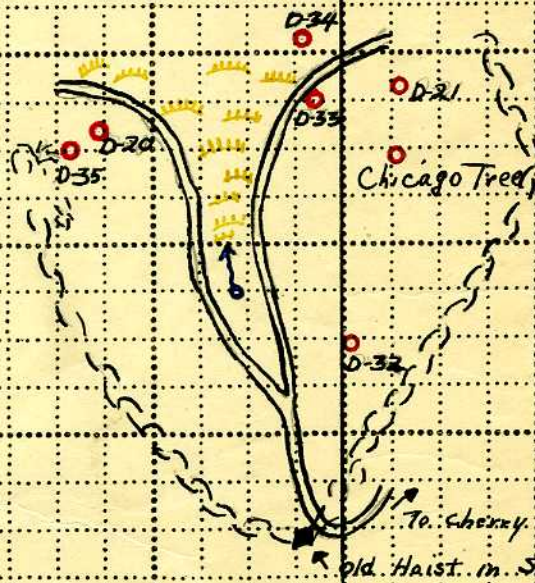
S Miscellaneous Research Land district. Mag. declin. 16° 30' Area _____ acres

D-4 Sequoia (Case designation) T. 13 S R. 27 & 28 E Mer. Scale 8 inches = 1 mile

Converse Basin Area

T. 13 S - R. 27 E

T. 13 S - R. 28 E



Section 13

Section 18

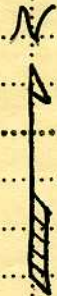
Legend:

Red circle: Big Tree Stumps

Yellow wavy line: Meadow

Wavy line: Ridge

Blue circle with dot: Spring



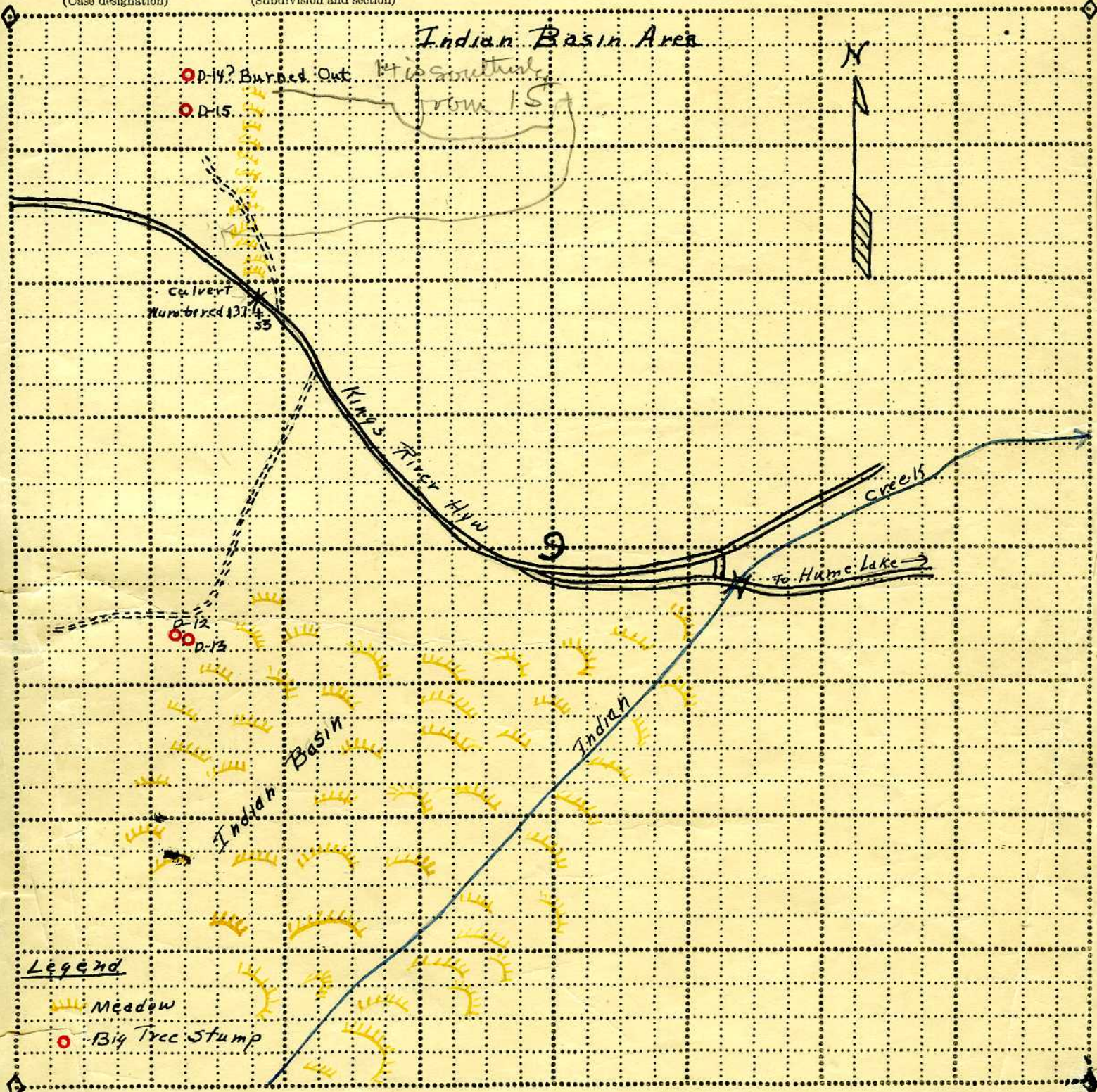
Field work by Borges & Brown Date 10-16-37 Platted by R. G. Brown

Remarks _____

Approved _____, 19____

UNITED STATES DEPARTMENT OF AGRICULTURE—FOREST SERVICE

S Miscellaneous Research Land district. Mag. declin. 16° 30' Area _____ acres
D-4 Sequoia Section 9 T 13 R 28 E Mer. Scale 8 inches = 1 mile
(Case designation) (Subdivision and section)



Legend
 Meadow
 Big Tree Stump

Field work by Borges & Brown Date 10-19-37 Platted by R. G. Brown

Remarks _____

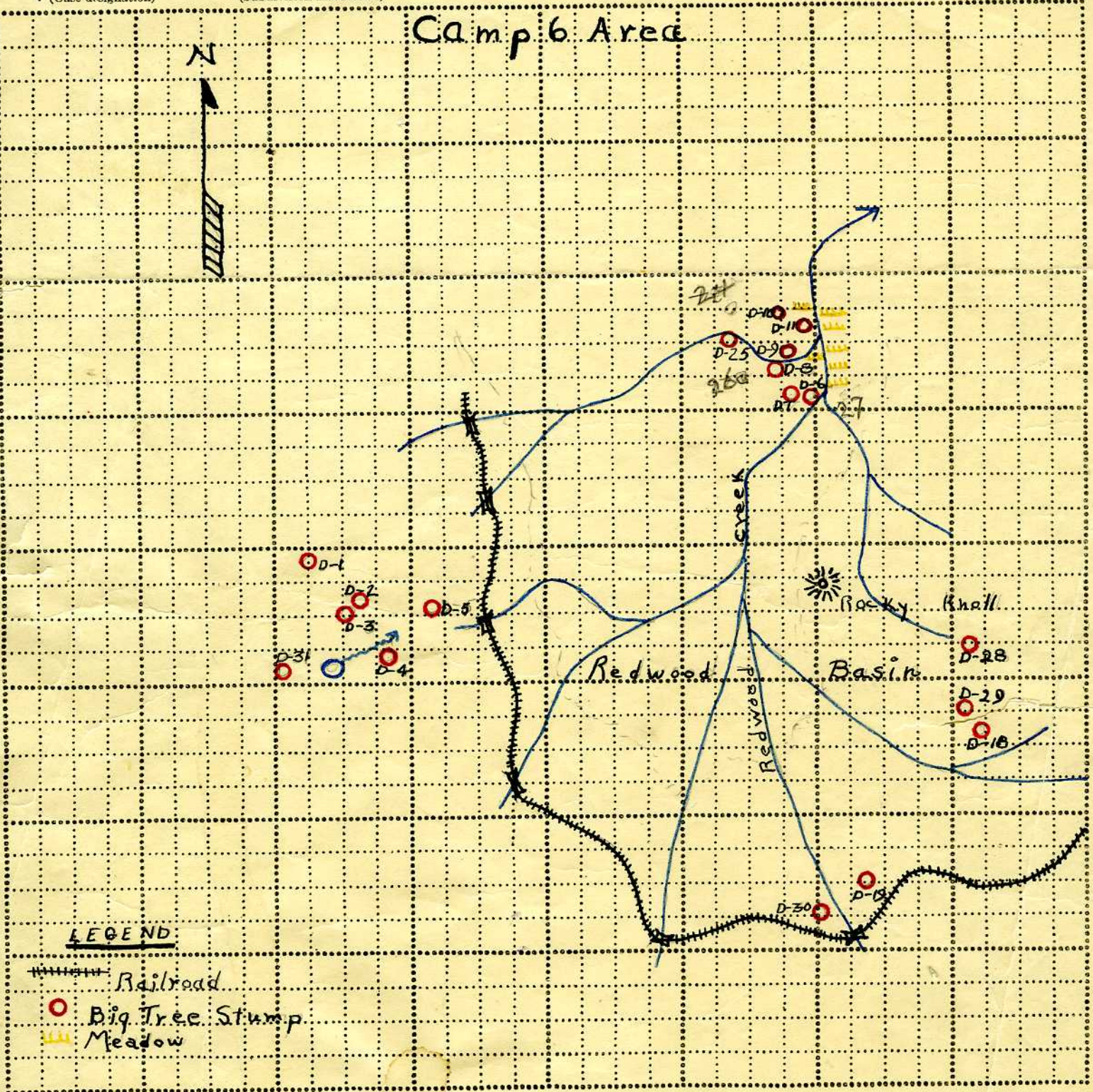
Approved _____, 19____

UNITED STATES DEPARTMENT OF AGRICULTURE—FOREST SERVICE

S
Miscellaneous Land district. Mag. declin. 16° 30' Area 640 acres
Research
Sequoia Section 17 T. 13 S R. 29 E Mer. Scale 8 inches = 1 mile
(Case designation) (Subdivision and section)

Camp 6 Area

N



LEGEND

- Railroad
- Big Tree Stump
- Meadow

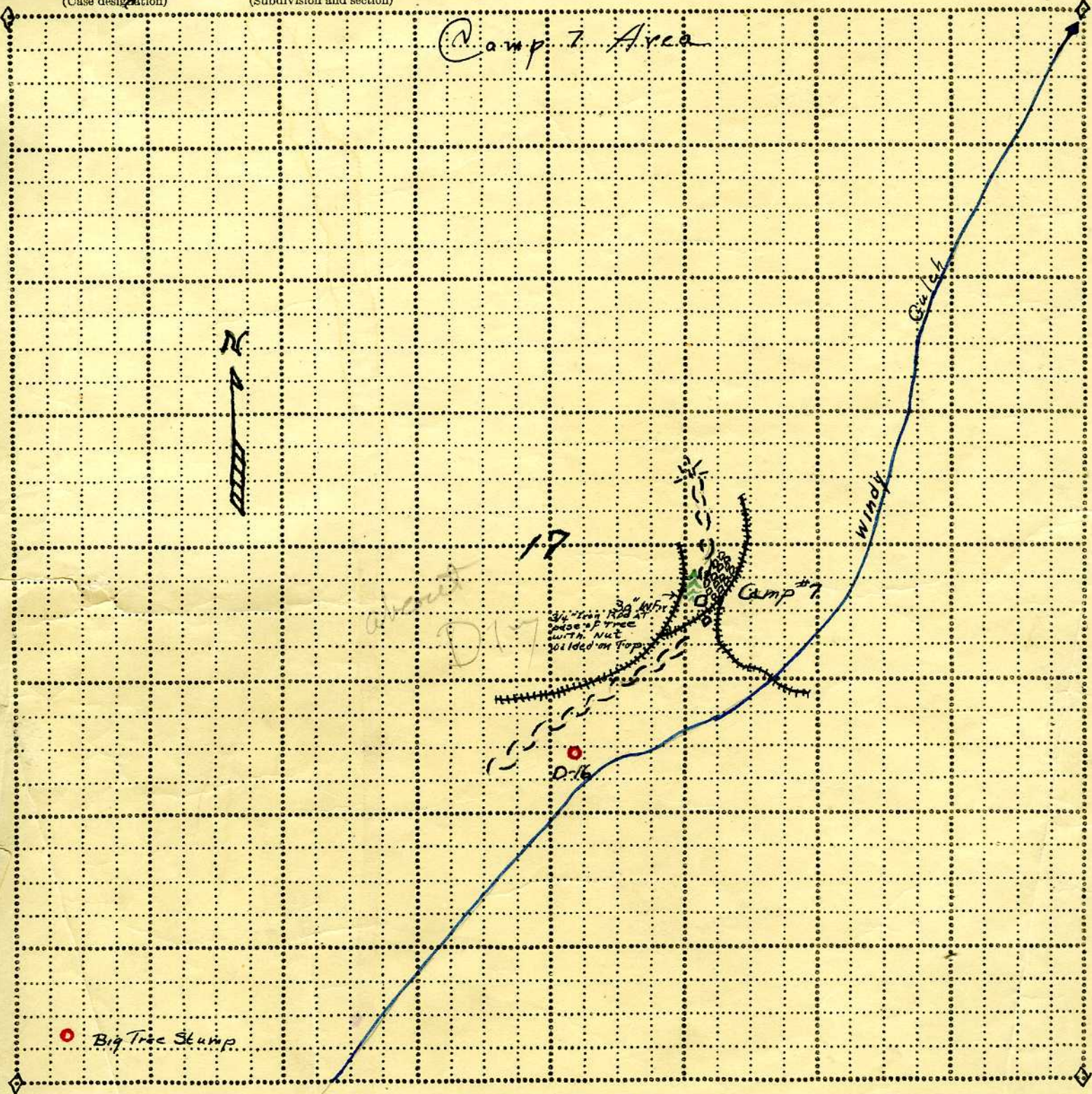
Field work by Barges & Brown Date 10-18-37 Platted by R.G. Brown

Remarks _____

Approved _____, 19____

UNITED STATES DEPARTMENT OF AGRICULTURE—FOREST SERVICE

5 Research
Miscellaneous Land district. Mag. declin. 16° 30' Area _____ acres
D-4 Sequoia Section 17 T. 135 R. 29 E Mer. Scale 8 inches = 1 mile
(Case designation) (Subdivision and section)



Field work by Borges & Brown Date 10-18-37 Platted by R. G. Brown

Remarks _____

Approved _____, 19____

Survey of Big Tree Stumps
 Converse Basin Area 10/16/37
 Brown & Standard F.S. Compass
 Borges 2 chain steel Tape

Sta From To	Bear	Dist in Chains	Remarks
A chi	S23°30'E	5.3	Chicago tree World Fair
A D33	S49½W	3	
A D21	S59E	2.5	
A D34	N65W	3.9	
A B	S67W	3	Traverse of Rd.
B C	S25W	2.4	
C D35	S83½W	11.2	
C D20	S78W	9.7	
C D	S75W	3.6	
D E	S7E	14	F is 1" iron rod set in SW corner of concrete foundation of old hoist in saddle on Hoist Ridge
E F	S14E	4.2	

D → 8.2 chains
 ↘ 0 D-32
 ↘ E
 From D toward E at 8.2 chains go due east 3.7 chains to D-32. At 12 chains from D to E forks of road

to Ralph Brown

Survey of Big Tree Stumps
 Indian Basin Area 10-19-37
 Brown, R.G. & Standard F.S. Compass
 Borges, A.T. 2 chain tape

Station From To	Bear	Dist in Chains	Remarks
D-12 D13	S79°E	1	
D-13 A	N70°E	28	sign board name 3½ at forks of road.
A B	N89E	7.3	
B C	S77E	5.7	N.W. corner of bridge across 10 mile on Hume Road
A D	N68W	11	Back to sign & running up Hwy. to N.W.
D E	N40W	7	
E F	N30W	12	
F G	N53W	2	To entrance of old logging road running toward D-15
G H	N16W	9.6	Leaving Kings Hwy. & running up old log skidway
H	D15 N34W	4.9	To D-15
D-15 D14	N7E	3	↘

Unable to locate D-14. Found large burned out stump in proper location which we believe to be D-14

to Ralph Brown
 D.P.

Survey of Big Tree Stumps
 Camp #6 Area 10-20-37
 Brown & Standard F.S. Compass
 Rudd 2 chain steel tape

Sta From To	Bear	Dist in Chains	Remarks
A B	S34W	2	80 ch. west + 20 chains north Ais. of sec. Corner $\frac{16}{21} \frac{15}{32}$
B C	S45W	4	Traverse down
C D	S56W	2	Railroad track
D E	N68W	6.5	}
E F	S67W	1.5	
F G	S40W	1	
G H	S32W	2.5	
H D-19	N37W	2.5	
H D30	S85W	5	
E D-18	N21E	X	} D-18 located at intersection of lines
A D-18	N52W		
D-18 D29	N35W	2	
D-18 I	N7W	3	
I D-28	N25E	2	
D-28 D-1	N81W	X	R.R. is Rocky Point

Camp #6 Survey Cont. sheet 2

Sta From To	Bear	Dist in Chains	Remarks
D-30 RP	N1E	X	Rocky Point located at intersection of lines
RP D-10	N9W	20	
D-10 D-25	S62W	4	
D-10 D-9	S13E	3	
D-10 D-8	Dues	4	
D-10 D-7	S7E	X	
D-10 D-6	S17E	X	
D-8 D-7	S27E	2	
D-8 D-6	S50E	3	
D-8 D-9	N20E	X	
D-8 D-26	S80W	2.5	
D-10 D-24	S36W	1.9	
D-1 D-3	S37E	X	D-1 is located N30°E
D-1 D-2	S51E	4.5	45 chains from section corner
D-1 D-4	S40E	X	
D-2 D-3	S48W	1	
D-2 D-4	S28E	X	

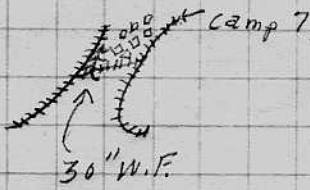
18 | 17 5/

Survey of Big Tree Stumps

Camp #7 Area 10-18-37

Brown, R.G. & standard F.S. Compass

Birges, A.T. Two chain Taps

Sta	Bear	Dist. in Chains	Remarks
D-14	N40°E	14	<p>A is 30" W. Pin in Camp 7 3/4" iron rod with nut on top driven into ground at base of tree.</p> 
Unable to find D-14			
<p>↳ Ralph Brown Dist. Ranger.</p>			