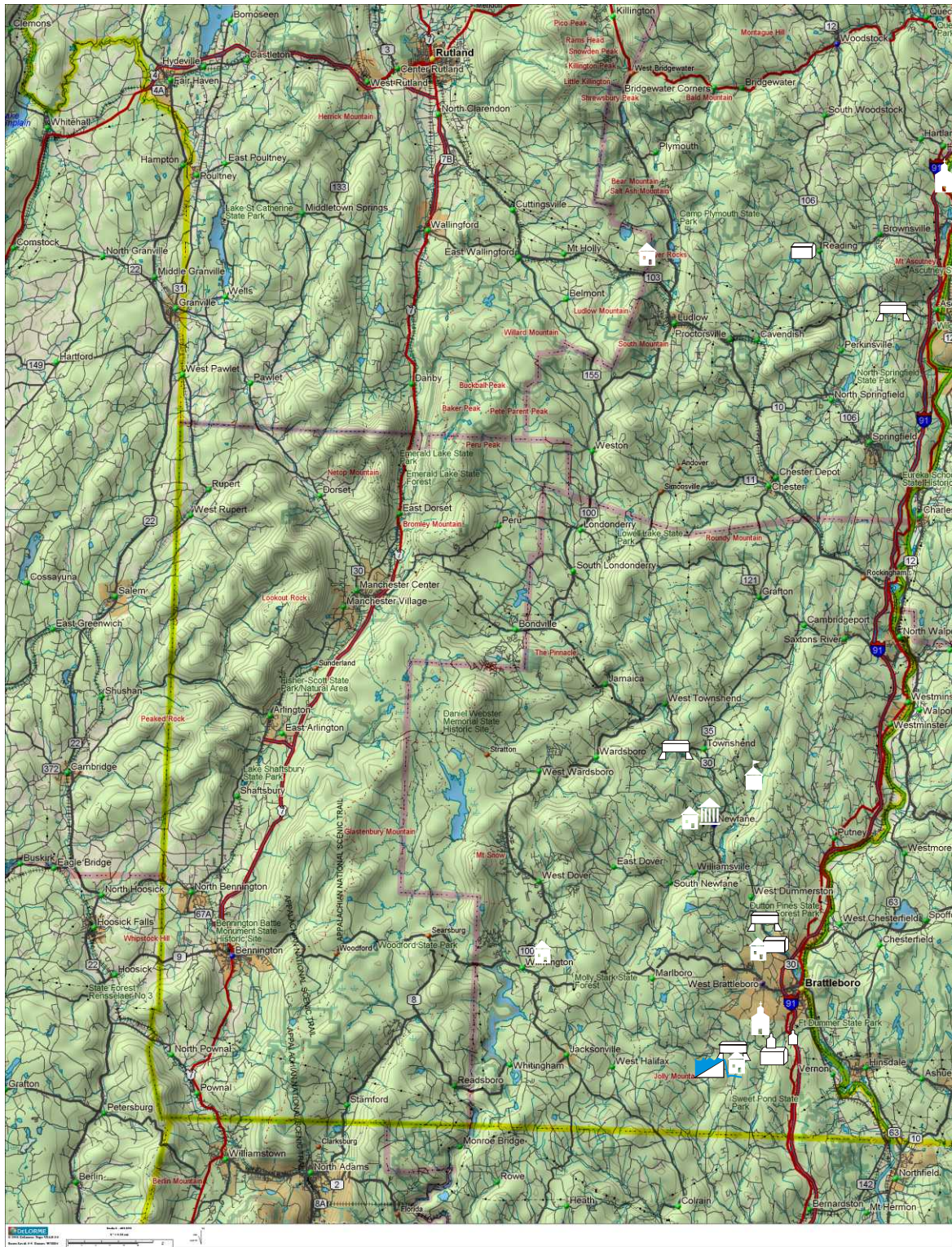


# Historical Dendrochronology in New England



Tree-ring investigations  
by  
Christopher Baisan  
Laboratory of Tree-Ring Research  
University of Arizona  
[cbaisan@ltrr.arizona.edu](mailto:cbaisan@ltrr.arizona.edu)



Map of sites sampled in southern Vermont



Meeting House, Guilford Center, Vermont. Samples came from roof trusses, scrap boards, and floor support posts.



Schoolhouse in Guilford Center above and apartments in West Brattleboro below.





Chestnut barn frame from Vernon, Vermont being reconstructed near Marlboro Vt.



Harry Evan's barn on the Weatherhead Hollow road, Guilford Vermont.  
Built 1803





Architectural detail, Evans barn.



Green River Covered Bridge and Jane Seymour's house, Green River Vermont. Samples below.







Church, Windsor, Vermont. Samples came from steeple which had been damaged by lightning.

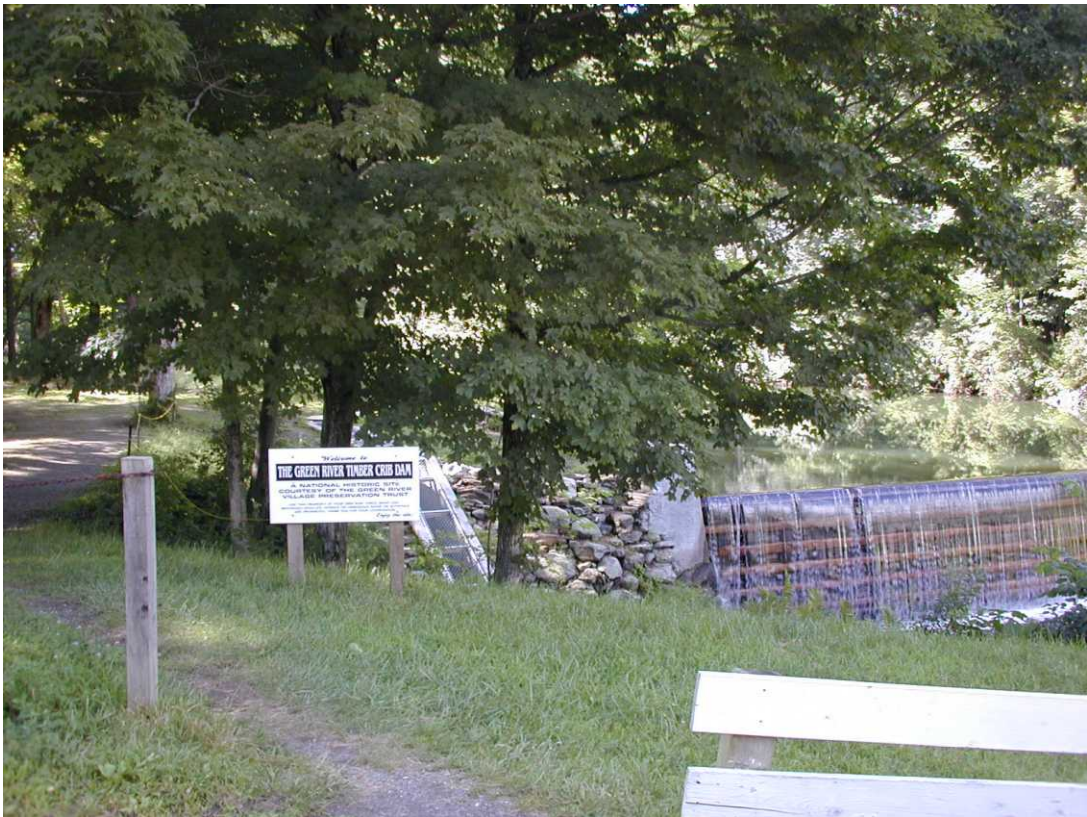


Church interior and attic, Windsor, Vermont.





Church following repair, Windsor, Vermont, July 2002.



Green River Crib Dam reconstruction. Finished above and in progress below.





Round Schoolhouse and barn, Brookline Vermont.





New Fane Courthouse (1824) and Four Columns Inn (Pardon-Kimball house).





Dix farm and barns, Reading Vermont ca. 1960s.





Dummerston bridge over the West River and the Scott Bridge in Townshend.







Forest Echo Farm 1880 (Mt. Holly Vermont) and Fair Winds Farm 1828 (Brattleboro).





Fair Winds Farm barn, Brattleboro above and sugar house frame in Algiers (Guilford) below.

